




EzFlow
Nail Systems



Artist:
ERIN ENG



Artist:
PEPIJN BORRER



Artist:
ALLISON BAKER

*F*or over twenty years, EZ Flow has been an industry innovator being the first to manufacture and distribute the French White Tip and the first to develop and market Colored Acrylics. Known worldwide as a competition brand pushing the envelope of technology and research, EZ Flow is committed to global education and professional development.

Our collections offer you the foundation for artistic expression and business success. EZ Flow is proud to present our newest products, along with your favorites, in this 2006 product catalogue. We thank you for your continued support and look forward to another beautiful year with you.



ACRYLIC SYSTEMS

WWW.EZFLOW.COM

IT'S THE STATE-OF-THE-NAIL-ART

Creating today's nail enhancement presents the nail professional with two challenges: the nail must not only be gorgeous—it must also be long-lasting. This combination of refined product texture and durability was impossible with old-fashioned powder and liquid formulas. But today, with our combination of Q Monomer, A-Polymer and Competition Powders, you can sculpt nails which are believably thin, flexible and fashionably long and strong! How do we do it? It's our revolutionary "Cross Link" molecule technology which allows for an elegant nail that stays super-strong without the thickness of old-school products.

Q MONOMER LIQUID

LIQUID ASSETS begin with Q MONOMER. With this innovative formula, we've eliminated the two greatest threats to the successful nail enhancement—discoloration and chipping or breakage.

- ✦ COLOR STABILIZERS prevent unsightly yellowing—pinks, white and crystal-clear powders retain their pigment integrity.
- ✦ PLASTICIZERS strengthen and protect nails from the knocks, shocks, chips and tough breaks!

THE SWEET SMELL OF SUCCESS will be yours when you introduce Q Monomer Liquid to your menu. For one thing, there's 40% less odor. And, it's easier to apply than any similar product on the market. This means less waste, and allows you to see more clients—all good news for the piggy-bank!

Available in: 4oz Item #66068
 8oz Item #66069
 16oz Item #66070
 32oz Item #66071



ACRYLIC SYSTEMS



A POLYMER & COMPETITION POWDERS

A POLYMER AND COMPETITION POWDERS are the other part of the powerful equation for perfect nail enhancements. In seven classic, gotta-have-it colors, both work with our Q Monomer Liquid. Our Competition Powders are quick-set to help you win... fast!



- ⌘ **FAST DRY, NO BUBBLES:** Encapsulated additives become activated and initiate the drying process when mixed with the monomer. And, because these two elements were formulated to work together synergistically, their interaction eliminates the bubbles which make any manicure seem less than professional.
- ⌘ **IT'S ALL INSIDE:** Internal pigment guarantees pure, intense pigment from the inside out, with every application. Our powder shades are manufactured under the most demanding conditions in the business, so that every nail is perfect, every time.
- ⌘ **LET IT SNOW:** Though the weather outside is frightful (or maybe the air-conditioner is just turned up too high), low temperatures will NOT cause these powders to form annoying crystals which compromise texture integrity.
- ⌘ **CONSISTENT COLOR EVERY TIME:** Tired of hearing clients say, "Oh, hmmm, that doesn't look like my white"? Nail to nail, jar to jar, our colors are precisely formulated to the highest industry standards, to ensure you the highest level of color performance.

ACRYLIC SYSTEMS



Available in: Clear	White	Truly White	Natural
1oz #66040	1oz #66052	1oz #66056	1oz #66044
4oz #66041	4oz #66053	4oz #66057	4oz #66045
8oz #66042	8oz #66054	8oz #66058	8oz #66046
16oz #66043	16oz #66055	16oz #66059	16oz #66047
Pink	Competition Pink	Competition White	
1oz #66048	1oz #66060	1oz #66064	
4oz #66049	4oz #66073	4oz #66065	
8oz #66072	8oz #66062	8oz #66066	
16oz #66051	16oz #66063	16oz #66067	

ACRYLIC KITS

LET'S GET IT STARTED!

Ready to deliver better service for better profits? There's no time like the present to introduce the advanced technology, superior product quality and ease of application of EZ FLOW acrylics to your menu.

PRO ACRYLIC STARTER KIT

PRO ACRYLIC STARTER KIT gets you in the flow, FAST!, with all five styles of our easy-to-use, easy-to-wear tips, five shades of powder, our color-stabilizing, strengthening, bubble-resistant Q Monomer liquid, primer and brush-on resin. Getting the perfect acrylic enhancement started was never so easy.

Item #60256

Contains: 2oz Q Monomer, 1/2oz Truly White, 1/2oz Pink, 1/2oz White, 1/2oz Clear, 1/2oz Natural, 1/2oz EzFlow Primer, 20ct Perfect C-Curve Forms, 20pk Leisure Tips, 20pk Endless Curve Tips, 20pk Glass Leisure Tips, 1/2oz Brush On Resin, DVD.



ACRYLIC SYSTEMS



with EzFlow you can...



ACRYLIC SYSTEMS



DELUXE PROLINE ACRYLIC KIT

A full-service salon in a box! No more scrambling for the right tools and materials - this complete kit has got you covered, starting with the basics contained in our Starter Kit, expanded to include the essentials needed by every pro. It's all here!

Item #60255

Contains: 4oz Q Monomer, 1/2oz Truly White, 1/2oz Pink, 1/2oz White, 1/2oz Clear, 1/2oz Natural, 1/2oz EzFlow Primer, 1/2oz UV 30, 1/2oz Essential Oil Plus, 1/2oz EZ Bond, 508 Oval Brush, 2oz Dissolve Brush Cleaner, EzFlow Dappen Dish, (2) 1/8oz Boogie Nights Glitters, 100 Grit White Tiger, 150 Grit Grey Wolf, 180 Grit Grey Fox, 240 Grit Sand Shark, Killer Whale 3-Way Shiner, 100ct Perfect C-Curve Forms, 20pk Classic French Tips, 20pk Leisure Tips, 20pk Endless Curve Tips, 20pk Glass Leisure Tips, 1/2oz Brush On Resin, 1oz Polish Remover, (2) 1/8oz Color Powders.



ACRYLIC SYSTEMS



BOOGIE NIGHTS ACRYLIC GLITTER

Turn the beat around! That disco ball is still set on “spin”, demanding glam nails that glimmer, shimmer and shine. It’s all about the tiny, reflective particles of holographic film in 30 strobe-seeker colors that ignite sparks of interest when the light hits them. And Boogie Fever isn’t something you can just brush on and remove—it’s got to be embedded deep in your soul, or, in this case, your client’s nails. Our advanced formulas utilize state-of-the-art acrylic technology, resulting in a resilient product which delivers durability as well as dazzle. Here’s a long-lasting nail that really can proclaim, “I Will Survive!”

CARNIVAL COLLECTION KIT:

Regardless of what the calendar says, it’s always time to let the good times roll! These nails are your personal, confetti-strewn invitation to lay down your burden—or just your cell-phone—and feel the fun of the party that never ends. Choose from fifteen jazzy new colors along with everything needed for uptempo nails that know how to celebrate.

Item #59030

Contains: (15)-1/8oz Carnival Collection, (1) Free 2oz Q Monomer, (1)-20 pk Glass Leisure Tips, (1)-20 ct Perfect C-Curve Forms.

Also available in 1oz open stock:

- | | |
|------------------------------|---------------------------|
| Mardi Gras #59031 | Grand Parade #59032 |
| Bourbon Street #59033 | Hurricane #59034 |
| Venezia #59064 | Masquerade #59071 |
| Dancing in the Street #59072 | Feathered Mask #59073 |
| Fat Tuesday #59074 | French Quarter #59075 |
| Rio de Janeiro #59076 | Show Me Your Beats #59077 |
| Voodoo #59078 | Jazz Band #59079 |
| | Carnival Queen #59080 |



DARE TO BE DAZZLING KIT:

How do you like it, how do you like it?
If you love it, here's "more, more more"
of a happening disco thing. Hot from the
dance floor, fifteen sparkling colors work
synergistically with our most innovative acrylic
formulas to create nails that feel mighty real,
and dazzle both day and night.

Item #59065

Contains: (15)-1/8oz Dare to be Dazzling Collection,
(1) Free 2oz Q Monomer, (1)-20 pk Glass Leisure Tips,
(1)-20 ct Perfect C-Curve Forms.

Also available in 1oz open stock:

Staying Alive #59035	Disco Nights #59036
Dy-No-Mite #59037	Shake Your Groove Thing #59038
Foxy Lady #59039	Super Freak #59040
Brick House #59041	Party Train #59042
Disco Inferno #59043	Jive Talking #59044
You Should Be Dancing #59045	Hot Stuff #59046
Funky Town #60010	Get Down On It #60014
	Boogie Fever #60015



WALK OF FAME KIT:

What disco diva hasn't dreamed of stepping off her platform roller-skates and leaving her footprints in Hollywood's most coveted stretch of concrete? Or seeing her name literally written in the stars along the most famous boulevard in the known world? Select from 15 Tinsel-Town glitter colors, along with everything else you'll need to create nails that are ready for their close-up.

Item #59066

Contains: (15)-1/8oz Walk of Fame Collection,
 (1) Free 2oz Q Monomer, (1)-20 pk Glass Leisure Tips,
 (1)-20 ct Perfect C-Curve Forms.

Also available in 1oz open stock:

Mel-Rose #59047 The Green Room #59048

Sunset and Wine #59049 Roll Out the Red Carpet #59050

Copper Casting Couch #59051 After Party #59052

The Cham-Pages Theater #59053 Blu-Very Hills #59054

Mali-Blue #59055 Movie Premier #59056

Hollywood Blvd. #59057 Leading Lady #59058

Silver Screen #60011 Sneak Preview #60013

Satin Monica Blvd. #60016



ACRYLIC SYSTEMS



with EzFlow you can...

step BY step

FLOWERS IN MEL ROSE



Artist:
BETH oney

1. Sculpt the free edge of the nail using Walk of Fame - Mel Rose.
2. Create foundation flowers using Competition White Powder
3. Place leaves of the flower and the center using Competition White Powder.
4. Shape, finish file and buff the nails. Apply UV-30 Top Coat.

DESIGN COLORED ACRYLIC

PINK AND WHITE WAS JUST THE BEGINNING!

Now, choose from more than 40 vividly colored powders to create permanent nail art in the form of pigmented enhancements. These superfine, gorgeous acrylic powders are formulated to work with any traditional nail liquid. It's color that will never chip, and your palette is limited only by your imagination. We've created four inspiring collections of pure, fashion-forward colored powders, grouped by color family. Each kit contains ten colors in 1/8oz sizes, along with clear acrylic powder, tips, forms and a FREE 2oz sample of our Q Monomer liquid. Buy all four collections and blend your own original signature colors.

ACRYLIC SYSTEMS



GEMSTONES COLLECTION:

If your client wears precious jewel tones, choose GEMSTONES COLLECTION, with bold tones including Ruby, Emerald and Sapphire.

Item #59068

Contains: (10)-1/8oz Gemstones Collection, (1) Free 2oz Q Monomer, (1)-20 pk Glass Leisure Tips, (1)-20 ct Perfect C-Curve Forms & (1)-1/8oz Clear Acrylic Powder.

Also available in 1/2oz open stock:

Emerald #58141	Ruby #58142
Amethyst #58143	Sapphire #58144
Peridot #58145	Pink Topaz #58146
Aqua Marine #58147	Citrine #58148
Amber #58149	Tourmaline #58150



EARTHSTONES COLLECTION:

If your client wears a soothing earth palette, choose EARTHSTONES COLLECTION, based on deep, ancient elements including Sand, Terra Cotta and Onyx.

Item #59067

Contains: (10)-1/8oz Earthstones Collection (1) FREE 2oz Q Monomer, (1)-20 pk Glass Leisure Tips, (1)-20 ct Perfect C-Curve Forms & (1)-1/8oz Clear Acrylic Powder.

Also available in 1/2oz open stock:

Onyx #58120	Gold #58121
Silver #58122	Bride #58123
Terra Cotta #58124	Sand #58125
Granite #58126	Limestone #58127
Rocky Mountain #58128	Rose Stone #58129



ACRYLIC SYSTEMS

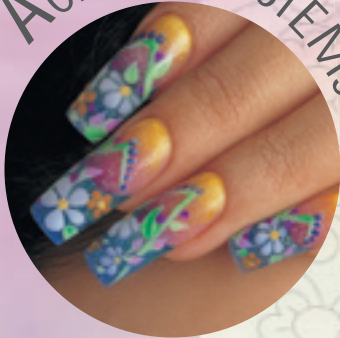


Artist:
LYNDA BARTLEY



Artist:
PEPIJN BORRER

ACRYLIC SYSTEMS



RAINBOW CANDY COLLECTION:

If your client wears youthful, pop-culture brights, choose RAINBOW CANDY, ten sweet treats like Bubble Gum, Lemon Drop and Grape Soda.

Item #59069

Contains: (10)-1/8oz Rainbow Candy Collection, (1) FREE 2oz Q Monomer, (1)-20 pk Glass Leisure Tips, (1)-20 ct Perfect C-Curve Forms & (1)-1/8oz Clear Acrylic Powder.

Also available in 1/2oz open stock:

- | | |
|------------------------|--------------------|
| Candy Corn #58101 | Bubble Gum #58102 |
| Cotton Candy #58103 | Sour Apple #58104 |
| Blueberry Twist #58105 | Grape Soda #58106 |
| Lemon Drop #58107 | Italian Ice #58108 |
| Raspberry Cream #58109 | Rock Candy #58110 |



PASTEL FLOWER COLLECTION:

If your client wears delicate petal-shades, choose PASTEL FLOWER, a bouquet of exquisitely soft tones including Sweet Pea, Water Lily and Morning Glory.

Item #59070

Contains: (10)-1/8oz Pastel Flower Collection,
(1) FREE 2oz Q Monomer, (1)-20 pk Glass Leisure Tips,
(1)-20 ct Perfect C-Curve Forms & (1)-1/8oz
Clear Acrylic Powder.

Also available in 1/2oz open stock:

Daffodil #58161	Lily of the Valley #58162
Wall Flower #58163	Petunia #58164
Morning Glory #58165	Water Lily #58166
Pansy #58167	Sweet Pea #58168
Gladiolus #58169	Geranium #58170



ACRYLIC SYSTEMS





accessories

BRUSHES, DAPPEN DISH & BRUSH CLEANER

QUITE SIMPLY, YOU CAN'T BE A PROFESSIONAL WITHOUT THESE BRUSHES.

The proper brush is essential to the perfect nail. You need a brush that follows your lead and follows your instinct. A brush that allows you to control product with precision, whether you're sculpting a lifelike enhancement, or crafting a razor-sharp smile line. With four specific functions in mind, it's time to brush up on the basics:

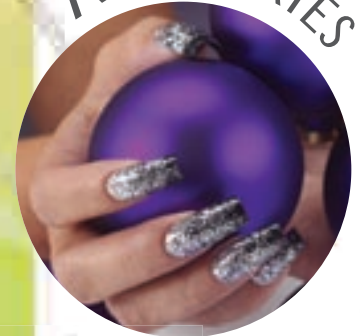
GRAND ARTIST OVAL 508

This size 8 is crimped at the Ferrell which makes a flatter belly while still maintaining a crisp point for perfect applications. The large belly allows you to add liquid into the working product for a flawless finish application. This oval brush is the "must-have" for creating dramatically deep smile lines, precise cuticle applications, fill-in maintenance and even the most intricate design work.

Item #60251



ACCESSORIES



GRAND ARTIST POINT 308

This larger-bellied, round version of our classic size 8 is excellent for adding liquid to the surface as you work to create a glass-smooth finish. This brush holds a perfect point for controlling product and creative detailing.

Item #60252

ACCESSORIES



ARTIST POINT 306

Small but mighty! Downsized for smaller applications, this size 6 round brush maintains a super-fine point, enabling you to control product in even the tightest spaces.

Item #60253

ARTIST EDGE 707

A flat-out fantastic brush! For times when you want a squared-off edge and flat brush shape for applying firm, even pressure over your nail-in-progress, the size 7 classic is also ideal for small, precise fill-in applications.

Item #60254



DISSOLVE

Keeping your brushes immaculate keeps the hairs flexible and resilient, and helps the brush last longer. This gentle cleanser removes every particle of product residue from both synthetic and sable-hair brushes, without damaging or drying out the fibers.

Available in:

Item #60260 – 2oz

Item #60261 – 4oz



DAPPEN DISH

No spills, no fumes, just easy access to your liquid.

Item #60244



ACCESSORIES



Artist:
MARIEKE JACOBS



Artist:
MARIEKE JACOBS

PRO FILES, BUFFERS & FORMS

FIRST, YOU BUILD IT.

The perfect nail starts with the perfect disposable form. We offer two versatile forms for easy sculpting of enhancements without tips.

UNIVERSAL

For the majority of your clients, fits most natural nail bed shapes.

Item #60245



OVAL

For the long, narrow nail plate with an overgrowth of hyponychium.

Item #60246



ACCESSORIES



THEN, YOU MAKE IT SHINE.

Designed for your comfort as well as dazzling performance, these files are completely immersible—that means you can sanitize and disinfect them thoroughly between uses, to ensure each client's safety. In six degrees of fineness, for a super-smooth texture and wildly glossy finish.

Killer nails start with the

SAND SHARK II

- ∞ 220/280 Grit Buffer File with thick foam center
- ∞ Quickly whisks away any file demarcations in the enhancement
—use prior to buffing for unbelievably smooth surface
- ∞ Washable

Item #60233



Take the perfect manicure off the endangered species list with the
WHITE TIGER

- ⊗ 100/100 Grit file
- ⊗ Lightweight, sanitizable
- ⊗ Reinforced center, to prevent weakening or breaking while being used
- ⊗ Perfect for sidewall filing and all enhancement shaping on all nail shapes

Item #60232



Break away from the pack with the
GREY WOLF

- ⊗ 150/150 Grit file
- ⊗ Light, easy to handle, sanitizable
- ⊗ Won't snap (nice wolfie!), thanks to the reinforced center
- ⊗ Ideal for blending tips, over-the-top filing and cuticle-contour filing

Item #60231



Clever girl—nails look smart with the
GREY FOX

- ⊗ 180/180 Grit file
- ⊗ Reinforced center, to prevent weakening or breaking while being used
- ⊗ Ideal for smooth-finishing all nail enhancements, regardless of shape

Item #60230



Work up a fierce shine with the
KILLER WHALE

- ⊗ 3-way Buffer
- ⊗ Solid plastic center prevents breakage
- ⊗ Great for men's manicures

Item #60234



ACCESSORIES



ACCESSORIES



Finish off the highly-evolved manicure with the adaptable
SNOW MONKEY

- ⌘ The ultimate shining buffer
- ⌘ May be used on both natural and acrylic nails
- ⌘ Use with EzFlow Miracle Shine for glossiest finish

Item #60235



Bling-bling and shine on with
MIRACLE SHINE

Buff up a mirror-finish that lasts for two weeks or more!
Microparticles polish the surface to a super high shine.

Item #60238

For diamond-dazzle, you need
EZFLOW PRO SHINE

- ⌘ Just two easy steps
- ⌘ No heat build-up
- ⌘ 100% sanitizable

Item #00988



NAIL PREP, NAIL TREATMENTS, TOOLS & MORE

THE GENIUS IS IN THE DETAILS.

We've put together a toolbox of everything to make the nail professional's day easier...and to keep your clients coming back for more, rebooking time and time again.

PRO PUSHER

Designed for cleaning and preparing the nail bed without scratching.

- ✦ Double-ended for double-duty—keeps cuticles in line AND removes Pterygium just by switching ends, so your work is done without having to sanitize two tools!
- ✦ Versatile—use it for manicures, pedicures and all artificial nail services.
- ✦ Prevent lift-off! Using our PRO PUSHER to fully prep the work area helps eliminating lifting and peeling of enhancements.

Item #60248



ACCESSORIES



PRIMER

Ready, set, prime! This formulation penetrates the nail, releasing moisture and oil in preparation for nail enhancement. Creates a perfectly dry work surface, assuring maximum adhesion of enhancements—no pop-offs or lifting.

Item #60241



ACCESSORIES



EZ BOND

Balances pH and eliminates moisture from the nail in preparation for other services—in only 3 – 5 seconds! Readies the natural nail plate for primer, glue or enamel, creating a perfect seal.

Item #60240



UV 30

Contains a reflective barrier with optical enhancers to make the white free edge of enhancements whiter-than-white! Also enhances the natural look of the nail bed as it protects nails from UV exposure.

Available in: 1/2oz – Item #60242

4oz – Item #60243



NEVER YELLOW SEALER

Let's make one thing perfectly clear: exposure to the elements, including sunlight, can discolor enamel, turning the polish or even colorless lacquer muddy-looking. This super-glossy sealant top coat protects lacquer from yellowing, dries in a flash.

Available in: 1/2oz – Item #66103

4oz – Item #66125





SPEED FINISH

In a rush? Who isn't? For the nail client on the run, this light-dried topcoat dries to a solid, hard finish with dazzling shine to protect enhancements and enamel.

Available in: 1/2oz – Item #66104
4oz – Item #66130

POLISH REMOVER

For a clean start, gently remove polish without irritating skin, drying surrounding skin or creating a chalky whitening of the nail.

Available in two pleasant scents:

Rainforest

1oz #59024
4oz #59025
16oz #59026
32oz #59027

Pineapple

1oz #59020
4oz #59021
16oz #59022
32oz #59023



ACCESSORIES



GET IT TOGETHER!

We've put together the Fab Four you'll need for your next deluxe nail treatment into a convenient EZ FLOW NECESSITIES DISPLAY.

This organizer holds 3 each of these essentials:

- ☞ UV-30 – 1/2oz
- ☞ SPEED FINISH – 1/2oz
- ☞ NEVER YELLOW – 1/2oz
- ☞ EZ BOND – 1/2oz,

along with helpful tips and information for product use.

12-Piece Display Item #42003



PROFESSIONAL NAIL TIPS

HERE'S A HOT TIP....

The quality of your enhancement starts with the highest-quality tip. One size does not fit all. Every client has a uniquely shaped nail, so we've developed a collection of nail "silhouettes" which flatter every finger. Collect them all, for the greatest versatility in your enhancement wardrobe.

- ✦ Tips are made with 100% pure ABS plastic for super-easy blending
- ✦ Thin and flexible, so they look natural and are less prone to breakage
- ✦ In five versatile styles to accommodate the range of natural nail sizes and shapes

ACCESSORIES



CLASSIC FRENCH TIPS

Ooh-la-la, this timeless white tip is the elegant start to the world's favorite enhancement. This tip creates a deep smile line with reinforced sidewalls.

Available in:

100ct	#66080	50ct #5	#39005
500ct	#66081	50ct #6	#39006
50ct #1	#39001	50ct #7	#39007
50ct #2	#39002	50ct #8	#39008
50ct #3	#39003	50ct #9	#39009
50ct #4	#39004	50ct #10	#39010



PERFECTION FRENCH TIPS

For the more slender nail bed—and wasn't it those formidable French who said a nail can never be too thin or too rich?—this tip extends the corners of the smile line for a longer, very elegant enhancement.

Available in:

100ct	#66090	50ct #5	#39055
500ct	#66091	50ct #6	#39056
50ct #1	#39051	50ct #7	#39057
50ct #2	#39052	50ct #8	#39058
50ct #3	#39053	50ct #9	#39059
50ct #4	#39054	50ct #10	#39060



ENDLESS CURVE TIPS

The skiing may be challenging at St. Moritz, and now you can meet the challenge of “ski-slope” nails by choosing this special full-well tip. Perfect for the client with an arched natural nail.

Available in:

100ct	#66082	50ct #5	#39015
500ct	#66083	50ct #6	#39016
50ct #1	#39011	50ct #7	#39017
50ct #2	#39012	50ct #8	#39018
50ct #3	#39013	50ct #9	#39019
50ct #4	#39014	50ct #10	#39020



LEISURE TIPS

“Demain”—it’s French for “manana”. Take a break with our most universal tip, suitable for the greatest variety of natural nail shapes. The full well tip also features expanded sidewalls.

Available in:

100ct	#66088	50ct #5	#39035
500ct	#66089	50ct #6	#39036
50ct #1	#39031	50ct #7	#39037
50ct #2	#39032	50ct #8	#39038
50ct #3	#39033	50ct #9	#39039
50ct #4	#39034	50ct #10	#39040

Also available in GLASS LEISURE:

100ct	#66086	50ct #5	#39045
500ct	#66087	50ct #6	#39046
50ct #1	#39041	50ct #7	#39047
50ct #2	#39042	50ct #8	#39048
50ct #3	#39043	50ct #9	#39049
50ct #4	#39044	50ct #10	#39050



ACCESSORIES



step BY step

SPRING ROSE WITH GLITTER



Artist:
BETH oney

1. Create the foundation of the 3-Dimensional Design. Create your free edge color using Grape Soda from the Rainbow Collection - define your smile line. Then from the Cuticle, fade forward Cotton Candy from the Rainbow Collection. Blend the two parts using #3 Dy-No-Mite from the Boogie Nights Dare to Be Dazzling Collection.
2. Cap the nail in Clear. Then finish file and buff to a high shine. Prior to applying three - dimensional art we recommend two coats of UV- 30.
3. Using Lilly of the Valley and Water Lilly from the Pastel Collection, double dip the powders creating a small ball. Water Lilly first and then Lilly of the Valley, place the leaves on top of the nail and create the detail you wish.
4. Using Competition White Powder, create the flower design on the nail. Place your accents on the design as desired.

with EzFlow you can...



with EzFlow you can...

FIBERGLASS & SILK WRAP SYSTEMS



WWW.EZFLOW.COM

STRENGTH & BEAUTY

Fiberglass is one of the lightest, strongest, most flexible substances ever invented—no wonder the makers of surfboards and speedboats as well as automobile and aircraft manufacturers switched to fiberglass fabrication long ago.

Our Fiberglass & Silk Wrap System offers you many of the same advantages. Enhancements made using this system feel weightless, look natural, and are exceptionally flexible and durable under pressure and stress. Try them both ways – BRUSH IT or SPRAY IT!

PROLINE FIBERGLASS KIT

Get the upper hand on your wraps – this kit is your complete resource for creating exquisite fiberglass and silk wrap extensions.

Item #59012

Contains: 1/2oz Brush On Resin, 1/2oz Building Resin, 1/2oz EZ Bond, 1/2oz Brush it Activator, 2oz Spray It Activator, 1/2oz Tip Blender, 4 assorted pro files and buffers, 1 yd fiberglass, 1 yd silk, 4 assorted nail tips.



FIBERGLASS & SILK WRAP SYSTEMS



FIBERGLASS & SILK WRAP SYSTEMS



FIBERGLASS STARTER KIT "SPRAY IT"

P-s-s-s-s-st...it's as easy as pushing a button.

Item #59014

Contains: Sheer Silk 1yd, Sheer Glass 1 yd, Spray It Activator 2oz, Tip Blender .5oz, Building Resin .5oz, Brush on Resin .5oz, EzBond .5oz, Leisure Tips 20 ct, Classic French Tips 20ct, Endless Curve 20 ct.



FIBERGLASS STARTER KIT "BRUSH IT"

This is your brush with destiny!

Item #59013

Contains: Sheer Silk 1yd, Sheer Glass 1 yd, Brush It Activator .5 oz, Tip Blender .5oz, Building Resin .5oz, Brush on Resin .5oz, EzBond .5oz, Leisure Tips 20 ct, Classic French Tips 20ct, Endless Curve 20 ct.



PIECE BY PRETTY PIECE

All of the components in our EzFlow Fiberglass Kits are also available for individual sale.

BRUSH ON RESIN

- ⌘ Super-clear finish
- ⌘ May be used to apply nail tips
- ⌘ Now with an improved, non-clog brush and spillproof bottle, for easier application!

Available in:

1/2oz – Item #66038

6gm – Item #66039



FIBERGLASS & SILK WRAP SYSTEMS



SPRAY IT ACTIVATOR

- ⌘ Use with BRUSH ON RESIN
- ⌘ Dries in less than 15 seconds
- ⌘ Hazard-free
- ⌘ No pitting
- ⌘ Does not contain Freon or III Trichloroethen

Available in:

2oz – Item #66032

8oz – Item #66033



BRUSH IT ACTIVATOR

- ⌘ Initiates smooth, consistent resin application
- ⌘ Non-burning formula won't irritate skin
- ⌘ Safe for natural nails
- ⌘ Easy brush clean-up with TIP BLENDER

Available in:

- 1/2oz – Item #66030
- 4oz – Item #66031



TIP BLENDER

- ⌘ Creates perfect, invisible seam-fusion between tip and natural nail bed
- ⌘ Safe for skin and nails
- ⌘ Doubles as gentle brush-cleaner

Available in:

- 1/2oz – Item #66034
- 4oz – Item #66035



BUILDING RESIN

- ⌘ High-viscosity resin strengthens enhancement, especially French Tips
- ⌘ Easy control application
- ⌘ Adds lustrous glaze finish
- ⌘ Excellent for minor repairs

Available in:

- 1/2oz – Item #66037



FIBERGLASS & SILK WRAP SYSTEMS



SHEER SILK

- ⌘ Easy-to-use mesh
- ⌘ Super-strong but sheer
- ⌘ Creates silk extensions with outstanding clarity

Available in:

1yd – Item #66010

Convenient precut 12-pack – Item #66011

SHEER GLASS

- ⌘ More durable than linen
- ⌘ More durable than paper
- ⌘ 100% pure woven fiberglass
- ⌘ Strong and flexible

Available in:

1yd – Item #66012

Convenient precut 12-pack – Item #66013



FIBERGLASS & SILK WRAP SYSTEMS



Artist:
PEPIJN BORRER

HAND & NAIL CARE



CUTICLE & NAIL REPAIR SYSTEMS

HANGNAILS HAPPEN.

Truly fantastic nails demand fantastically healthy-looking hands—but constant exposure to weather, contact with household chemicals, even handling papers at work all take their toll on the vulnerable skin of the hands and fingers. Don't let hangnails and dry, cracked cuticles detract from your perfect enhancements and gorgeous enamel application. Our family of natural nail care products combine natural fruit acids (AHAs) to gently exfoliate around the nail, and moisturizers to plump up thirsty cells and keep skin supple and glowing.

2-in-1 Balance

2-IN-1 BALANCE treats nails as well as cuticles and skin for the best of both worlds. This unique product stabilizes the keratin and amino acids in the natural nail as well as supporting healthy skin function. Exfoliates dead, dry cell debris around the cuticle and nail, preventing brittle splits and cracks. Ideal for clients who can't stop "picking." Recommend that clients use 2-IN-1 BALANCE daily before using CUTICLE LOVE for their best nails, ever.

12-piece display of 1/2oz tubes – Item #59005

CUTICLE LOVE

CUTICLE LOVE is all about daily nurturing. This softener is safe for use with both natural nails and enhancements. Prevents cuticles from drying, splitting and forming unsightly snags. Recommend it to your clients as a nightly treat right before "lights out" for replenished, restored cuticles in the morning.

12-piece display of 1/2oz tubes – Item #59004



HAND & NAIL CARE



Hand & nail care



fade away

FADE AWAY is what we all want thick, hard, painful cuticle overgrowth to do! When mere moisturizer is not enough, use this transparent gel to melt away tough cuticles that easily get “out of hand”. Just one application gently removes dead skin around the nail, leaves cuticle area moist, refreshed and refined.

12-piece display

1/2oz tubes – Item #59006

2oz tube – Item #59007



natural nail treatment

NATURAL NAIL TREATMENT is a nail-ambulance in a bottle—especially for compromised natural nails that are in recovery after enhancements have been removed. This all-purpose natural strengthener restores and rebuilds the integrity of strong nails.

1/2oz – Item #66102

4oz – Item #66120



essential oil plus

ESSENTIAL OIL PLUS gets to the essence of smoothing and soothing cuticles that are feeling a bit fragile or “at risk”! Natural botanicals penetrate deep into the skin to keep cuticles hydrated and encourage healthy nail growth. Great for clients with artificial as well as natural nails—will not lift enhancements. Also excellent for adding a deep-moisturizing step to pedicures.

12-piece display of 1/2oz bottles – Item #59001



“two” the rescue!

Here’s what you need most to bring brittle, traumatized nails back to their best—1/2 oz bottles of ESSENTIAL OIL PLUS with Jojoba and Aloe Vera oil, side by side with deeply restorative NATURAL NAIL TREATMENT. Help your clients tag-team dry, ragged cuticles for healthier, more beautiful hands.

12-piece display includes six 1/2oz bottles of each product – Item #42008



Hand & nail care



SILKYSOFT HAND & BODY LOTIONS

Gifts of the earth, in the form of healing botanicals and soothing floral essences.

For centuries, fruits, flowers, nuts, seeds, leaves and grasses were the precious ingredients of the world's formulas for health and beauty treatments. Rediscover these natural treasures in our SILKYSOFT hand & body lotions, in six aromatic combinations, and invite clients to purchase a bottle of their very own in their favorite fragrance after a SILKYSOFT manicure or pedicure service!



Each of our six SILKYSOFT hand & body lotions is formulated with:

SWEET ALMOND OIL – Neutral, soothing base

ALOE VERA – Used for centuries, taken internally as well as externally, to calm inflammation

LEMON – Cooling and clarifying, with antibacterial and antifungal properties

LAVENDER – An ancient relaxing herb

ROSEMARY LEAF EXTRACT – Stimulating and antiseptic

VITAMINS A, C AND E – Antioxidants which scavenge and fight free radical cell damage



HAND & NAIL CARE



AWAPUHI WILDFLOWERS

8oz – Item #60278



GRAPEFRUIT CITRUS

8oz - Item #60275



Tangy

KIWI APPLES

8oz - Item #60284



Fresh

CUCUMBER MELON

8oz - Item #60272



Clean

HAND & NAIL CARE



CRANBERRY BERRIES

8oz - Item #60281



Spicy

MANGO ORANGE

8oz - Item #60287



Ripe

SPA ELEMENTS MANICURE - PEDICURE

Our hands and feet are masterpieces of engineering, with exquisitely fine sensitivity and control. But hands rapidly show signs of photodamage and premature aging. Exposure to the elements year-round, combined with constant contact with paper products, household chemicals and other common irritants can deplete hands of moisture. Likewise, our hard-working feet support us through life, building callous and losing suppleness along the way. Unlike the scalp, face, chest and back, the hands and feet contain no oil (or sebum) -producing glands. So, since the skin of our hands and feet can't replenish their own natural moisturizers, SPA ELEMENTS MANICURE by EZFLOW restores resilience and softness where we need it most.

Our SPA ELEMENTS system, formulated from Nature's own medicine-chest of precious botanicals, mineral extracts and essential oils, revitalizes hands and feet in five easy steps. All five products are deeply hydrating to the skin, working synergistically to turn back the hands of time, relieving muscle tension and balancing body and soul. SPA ELEMENTS is available as a convenient starter kit, as well as individual sizes.

STEP 1 – LEMON TEA TREE SOAK

This cleansing first step combines the pristine, tonic essence of Lemon with the naturally antiseptic properties of Tea Tree in a purifying bath for hands or feet. This antibacterial soak sanitizes hands and feet and begins the natural exfoliation process.

Available in : 8oz – Item #66151
32oz – Item #66152



HAND & NAIL CARE



STEP 2 – CRYSTAL MINERAL SCRUB

Slow cellular turnover on hands and feet leads to thickened skin, resulting in a dull, lifeless appearance. Heavy cell debris on the surface of the skin makes it impossible for moisturizers to effectively penetrate, leaving hands and feet feeling and looking dry. This sparkling salt scrub sloughs away dead surface cells and calluses, and nurtures the skin with naturally emollient Avocado, Shea Butter and Jojoba oil for softer, instantly *spa*-tacular results.

Available in: 6oz – Item #66153
56oz – Item #66154



STEP 3 – BUTTERMINT BUFFING SCRUB

The exfoliation process is further refined with our stimulating, deeply emollient treatment buffing scrub. Skin is gently polished while tangy essences of Tangerine, Peppermint and Spearmint refresh the skin of the hands and feet, and tropical Coconut oil richly moisturizes.

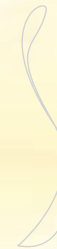
Available in : 6oz – Item #66155
56oz – Item #66156



STEP 4 – WHITE TEA MASSAGE LOTION

Detoxification and deep relaxation work in tandem with anti-oxidant action in this stress-reducing, organic massage formula. Recent research has proven that White Tea is even more effective than Green Tea polyphenols in fighting free radical damage, making the skin more responsive and enabling it to repair itself more effectively. Invigorating Wild Yam, exotic Ginger and Black Walnut extracts ease muscle tension and re-balance your client's energy when this penetrating massage lotion is used as part of a reflexology treatment.

Available in : 8oz – Item #66157
32oz – Item #66158



STEP 5 – GINGER ROOT MOISTURIZING LOTION

Renewed and ready to face the world! This lively finale to the SPA ELEMENTS manicure or pedicure seals in moisture and leaves hands and feet feeling silky and revitalized, thanks to the essence of spicy Ginger root, long prized in Asia as a restorative energy-tonic.

Available in: 8oz – Item #66159

32oz – Item #66160



SPA ELEMENTS KIT

It's easy to get started with this handy kit of trial sizes. SPA ELEMENTS KIT contains the five essential elements to smoother, more youthful skin as part of a spa-quality manicure or pedicure treatment.

Item #66162

Contains: 2oz Buttermint Buffing Scrub, 2oz Crystal Mineral Scrub, 2oz Ginger Root Moisturizing Lotion, 2oz Lemon Tea Tree Soak, 2oz White Tea Lotion, Instruction Booklet.



HAND & NAIL CARE



UPGRADE TO LUXURY

Institute a new policy of indulgence. Our PROFESSIONAL KIT turns your salon into a spa with full-size offerings of the full SPA ELEMENTS line.

Item #66161

Contains: 6oz Buttermint Buffing Scrub, 6oz Crystal Mineral Scrub, 8oz Ginger Root Moisturizing Lotion, 8oz Lemon Tea Tree Soak, 8oz White Tea Lotion, Santizable Foot File, Instruction Booklet.



STEP BY STEP

PETALS WITH SHIMMER

with EzFlow you can...



1. Apply Walk of Fame - Silver at the free edge of the nail.
2. Apply Walk of Fame - Gold at the cuticle area & fade Walk of Fame - Silver to the center of the nail.
3. Begin in the center of the nail, using Competition White Powder to create flowers, getting smaller towards the cuticle and towards the free edge.
4. Cap the nail in Clear Powder.
5. Shape, finish file and buff the nails. Apply UV-30 Top Coat.

Artist:
MAE LING PARRISH



gel It![™]

gel It! IS NOT AVAILABLE IN THE USA

WWW.EZFLOW.COM

ENHANCED UV GEL SYSTEM

A truly modern alternative to powders and liquids, gel nails offer exceptional design versatility. Our UV *gel It!* gel system brings together the latest innovations in gel ingredient formulation and technology, and now application is more consistent and efficient than ever. In seven subtle shades, the results are long, strong and so natural-looking—you'll love our gel products for creating extra strong tip overlays, freeform sculpting, free edge extensions, natural nail beds and pedicures.



GEL KIT!

Now your business is really beginning to gel! Here's everything you need to create 55 full sets of the most durable, flattering *gel It!* gel nails your clients have ever worn. If you're just introducing gels as a menu item, use this complete, easy-to-use kit to get started.

Item #39064

Contains: 1/2oz french it!, 1/2oz white it!, 1/2oz clear it!, 1/2oz blush it!, 1/2oz pink it!, 1/2oz edge it!, 1/2oz cover it!, 1/2oz finish it!, 1/2oz Ez Bond, 1/2oz EZ Primer, 2oz cleanse it!, 5gr Brush On resin, 20pk Perfection Tips, 20pk Classic French Tips, 20pk Leisure Tips, 20pk Clear nail forms, 60ct Nail wipes.

LIGHT IT!

Your clients will see the light with the UV Lamp we've developed specifically to work with our *gel It!* enhancements. They'll love the rapid, even curing and drying. You'll love the space-saving, single-hand design—it's even portable, for housecalls!

Item #39074 (110V)

Item #39074 IN (220V)

Item #39074 UK (240V)



REPLACEMENT BULBS

LIGHTEN UP...with a 2-pack of replacement bulbs for your LIGHT IT! UV Lamp. Each 4-watt bulb burns for 3,000 hours—keep an extra pack on hand so you're always prepared to create the perfect gel manicure.

Item #39081



GEL IT! 907

Want to BRUSH UP on your gel application skills? Every manicure's a masterpiece with our *gel It!* 907 sculpting brush. We've used sable hair for its flexibility, resilience and unique ability to control, carry and distribute product evenly to your client's nails. With proper care, this brush will be an indispensable tool for a very long time.

Item #39076

EZ CLEAR FORM

FORM FOLLOWS FUNCTION with our versatile EZ CLEAR FORM. Our disposable, universal form meets the needs of a wide range of clients, for graceful, subtle sculptured nails that conform to the natural nail bed.

- ✦ TRANSPARENT – For flash-fast curing.
- ✦ REINFORCED PLASTIC – Stronger for clients who like to play rough!
- ✦ EXTENDED TAB – Flatters the flatter nail by creating a more curvaceous “C” shape for sculpting.
- ✦ PERFORATED BACK – Perfect for the client with a broader nail bed, allows you to pen the form from behind.

250 count – Item #60247



gel It!



A PERFECT SHADE OF PALE

We offer seven subtle variations on the classic pink-and-white theme, with varying degrees of opacity and coverage to match the needs of every client.



gel It!



COVER IT!

For nail bed pink coverage



PINK IT!

Intense pink gel



CLEAR IT!

Crystal clear building gel



FRENCH IT!

For bright white extensions

PINK IT!

1/2oz #39067

BLUSH IT!

1/2oz #39066, 2oz #39083

FRENCH IT!

1/2oz #39065, 2oz #39079

EDGE IT!

1/2oz #39068

WHITE IT!

1/2oz #39069

COVER IT!

1/2oz #39070

CLEAR IT!

1/2oz #39071, 2oz #39078



WHITE IT!

For soft white extensions



BLUSH IT!

Soft pink gel



EDGE IT!

For natural looking free edge extensions

For perfectly pristine nails, try two fresh ways to make a clean getaway:

CLEANSE IT!

CLEANSE IT! solution pampers cuticles and surrounding skin with deeply nourishing Vitamin E as gooey, gummy residue melts away like magic. This gentle, fast-working solvent leaves your gels absolutely immaculate with no damage to enhancements.

Available in : 2oz squeeze bottle – Item #39073
8oz – Item #39077



FINISH IT!

After your gels are thoroughly cleansed, top it all off with this UV Gel Top Coat formulated to protect and prolong the life of your enhancements. May be used over acrylics as well as gels for a dazzling finish.

Item #39072





with EzFlow you can...



AMERICAN INTERNATIONAL INDUSTRIES

Los Angeles, CA 90040

AII(UK)Ltd., Berkshire RG1 7SR

Ez Flow® is a registered trademark of AII

www.ezflow.com ° Made in USA

©2006 EzFlow - AII

\$3.50
05/18/2006
14-1227